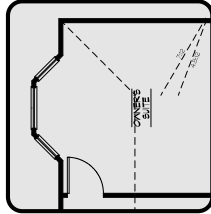
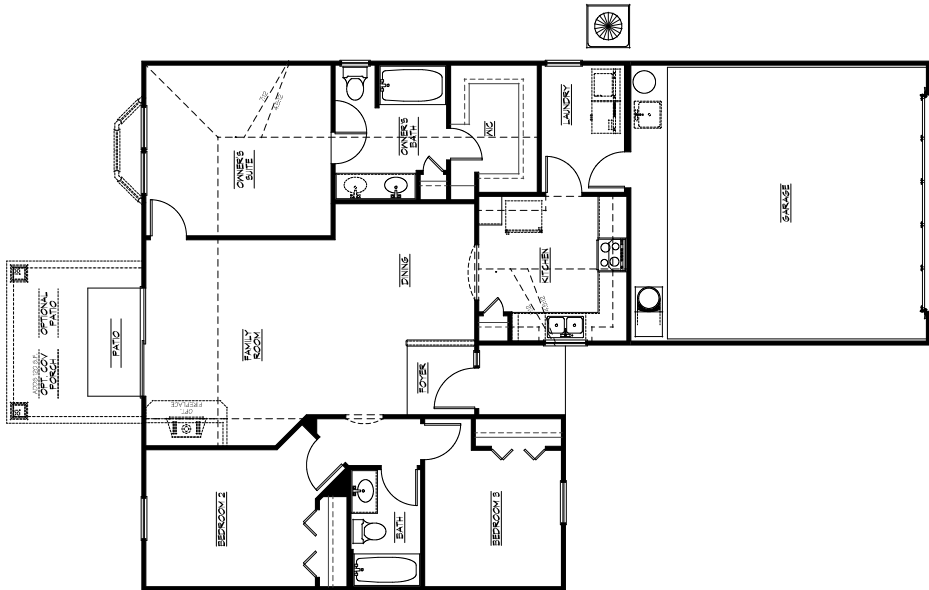




The Right Design.

The Right Experience.

# Willow Grove



## CLAIREMONT II

| AREA TAB           |            |
|--------------------|------------|
| LIVING 1st         | 1,296 S.F. |
| TOTAL LIVING AREA  | 1,296 S.F. |
| GARAGE             | 469 S.F.   |
| COVERED ENTRY      | 28 S.F.    |
| TOTAL COVERED AREA | 1,793 S.F. |

(2008) JDB Homes, Inc. reserves the right to change all prices, terms, plans, materials, specifics, options, upgrades, incentives and other concessions without notice at the discretion of JDB Homes, Inc. All square footage is approximate. Base price includes base home and standard for only. Many lots include substantial for premitans and/or predetermined options, which are in addition to the base price. Prices are not guaranteed and are subject to change unless agreed upon in a purchase agreement signed by buyer and accepted by an authorized representative of JDB Homes, Inc.

EQUAL HOUSING OPPORTUNITY  
CBC 058298

[www.newjdbhomes.com](http://www.newjdbhomes.com)