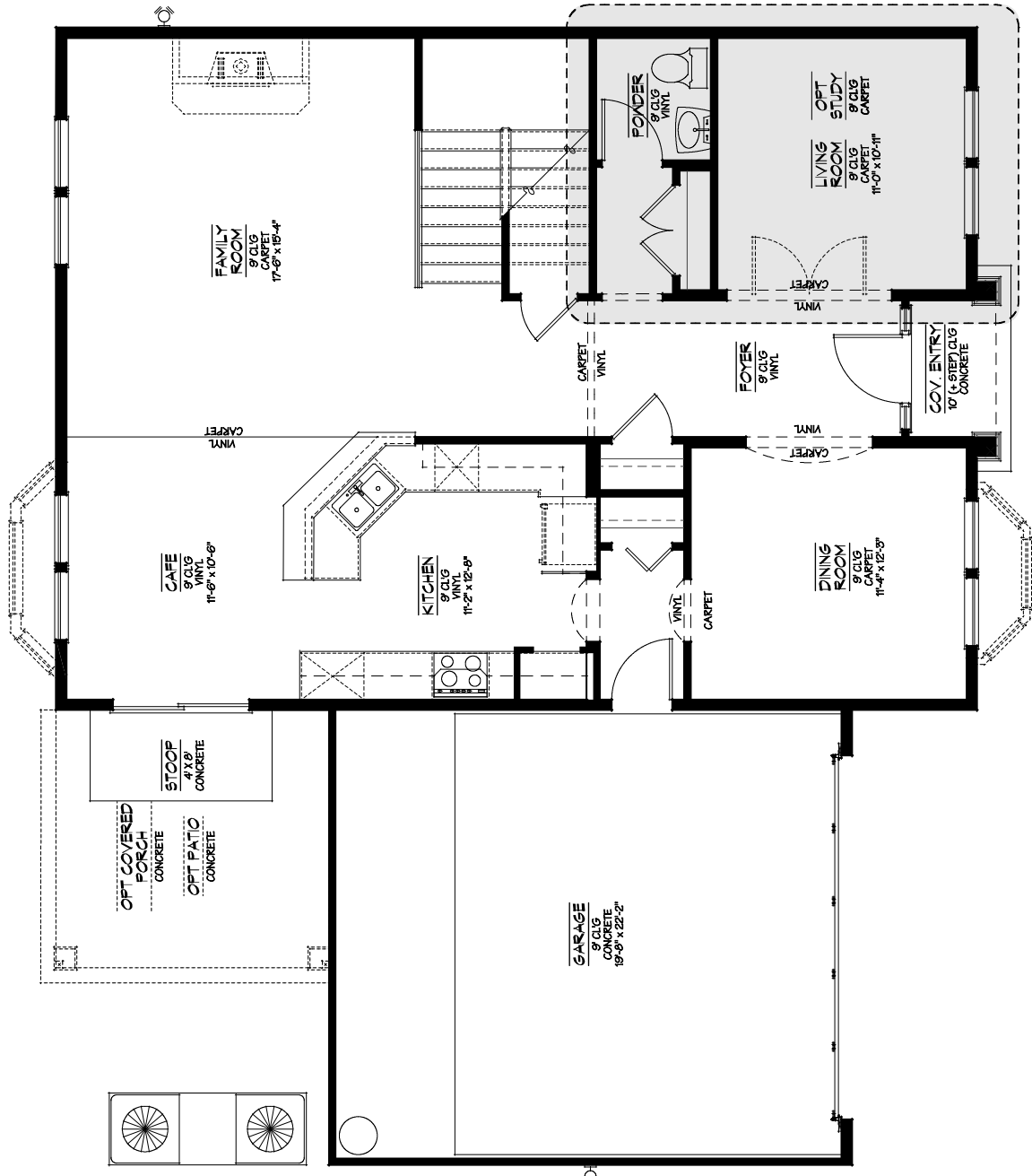




# Trout River Bluff



## BAYSIDE II

### First Floor Plan

AREA TAB	
LIVING 1st	1,197 S.F.
LIVING 2nd	1,215 S.F.
<b>TOTAL LIVING AREA</b>	<b>2,412 S.F.</b>
<b>GARAGE</b>	<b>460 S.F.</b>
<b>COVERED ENTRY</b>	<b>24 S.F.</b>
<b>TOTAL COVERED AREA</b>	<b>2,896 S.F.</b>

(2008) JDB Homes, Inc. reserves the right to change all prices, terms, plans, materials, specifics, options, upgrades, incentives and other concessions without notice at the discretion of JDB Homes, Inc. All square footage is approximate. Base price includes base home and standard lot only. Many lots include substantial lot premiums and/or predetermined options, which are in addition to the base price. Prices are not guaranteed and are subject to change unless agreed upon in a purchase agreement signed by buyer and accepted by an authorized representative of JDB Homes, Inc.



[www.newjdbhomes.com](http://www.newjdbhomes.com)

CBC 058298