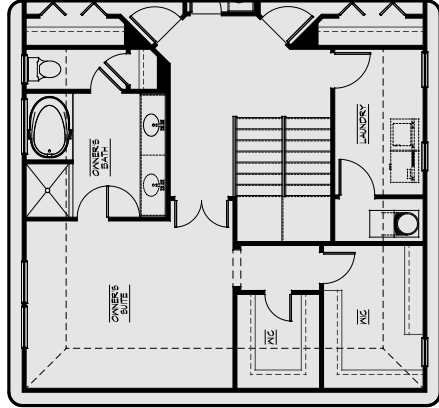




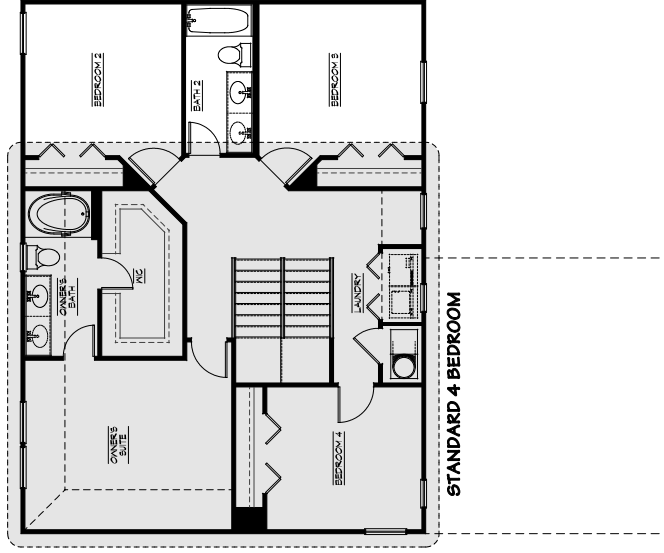
The Right Design.

The Right Experience.

# Willow Grove

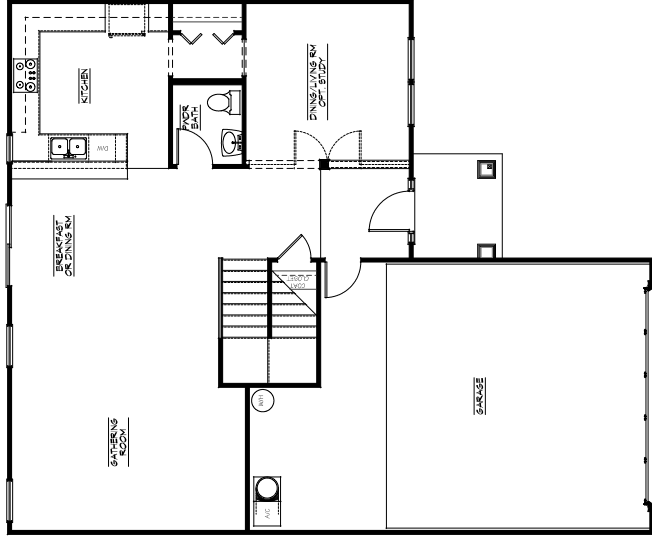


OPT 3 BEDROOM W/ HIS & HER WALK-IN CLOSETS



STANDARD 4 BEDROOM

SECOND FLOOR



CHELSEA

FIRST FLOOR

AREA-TAB	
LIVING 1st	1,014 S.F.
LIVING 2nd	1,218 S.F.
TOTAL LIVING AREA	2,232 S.F.
GARAGE	575 S.F.
COVERED ENTRY	43 S.F.
TOTAL COVERED AREA	2,845 S.F.



CBC 038298

(2008) JDB Homes, Inc. reserves the right to change all prices, terms, plans, materials, specifics, options, upgrades, incentives and other concessions without notice at the discretion of JDB Homes, Inc. All square footage is approximate. Base price includes base home and standard for only. Many lots include substantial for premitans and/or predetermined options, which are in addition to the base price. Prices are not guaranteed and are subject to change unless agreed upon in a purchase agreement signed by buyer and accepted by an authorized representative of JDB Homes, Inc.

[www.newjdbhomes.com](http://www.newjdbhomes.com)